

MACHINO PLASTICS

WELCOME

YOU



MACHINO PLASTICS PLANTS OVERVIEW

INJECTION MOLDING PLANTS

Gurgaon Plant



Manesar Plant



Gujarat Plant



Pithampur Plant



MOULD MANUFACTURING PLANTS

Manesar Mold Plant



Gujarat Mold Plant





Leaders in Automotive Plastics Parts Since 1987

Molding your Concepts into realization

Machino established
1st plant injection
molding in Gurgaon.

1987

1990

Gurgaon Plant
Expansion

Started supplies to
VECV

2004

2008

2nd Plant established
for injection molding
at Manesar

3rd Plant established at
Pithampur for
injection molding

2011

2016

Manesar Plant
Expansion

Established commercial
Mould Manufacturing
facility at Manesar

2019

2020

Started Supplies to
MG Motors

Entered in business
with White Goods
OEM's - Mould
manufacturing started
for M/s Daikin India.

2021

2022

1. Mould Manufacturing plant
started at Becharaji, Gujarat
2. Injection molding plant started at
Becharaji, Gujarat



MACHINO PLANT LOCATIONS



Becharaji - Molding



Becharaji - Tool Room



Pithampur - Plant

Gujarat - 2 Sites

Delhi NCR - 3 Sites



Gurugram - Molding



Manesar - Molding



Manesar - Tool Room



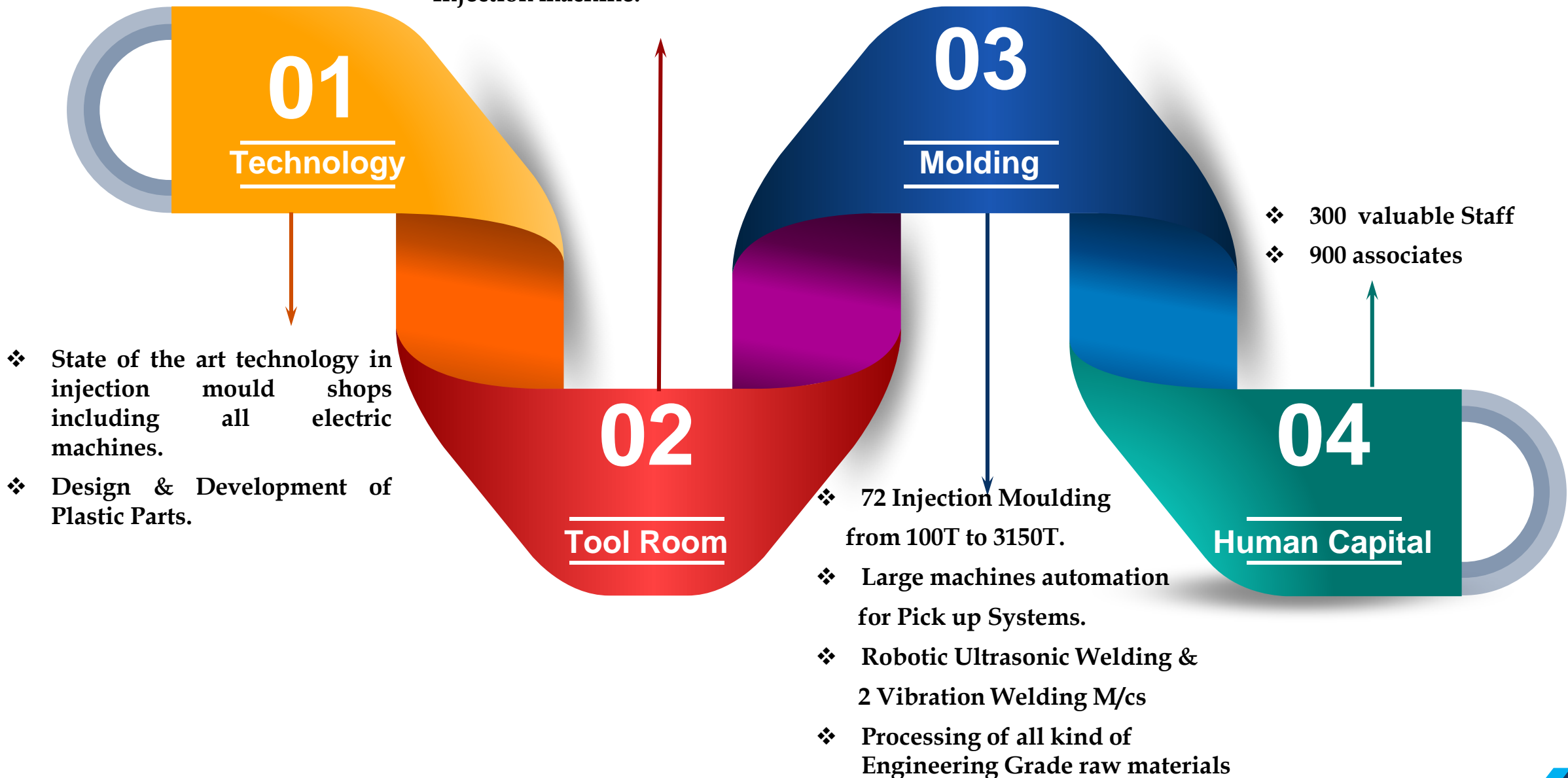
Manesar - Warehouse

Pithampur - 1 Site



MACHINO STRENGTHS

- ❖ Design & Development of Moulds & checking fixtures.
- ❖ Well equipped machine shop for tool manufacturing weigh up to 30T & 2500T Injection machine.





ISO 9001:2015



IATF 16949



ISO 14001:2015



OHSAS 18001:2007

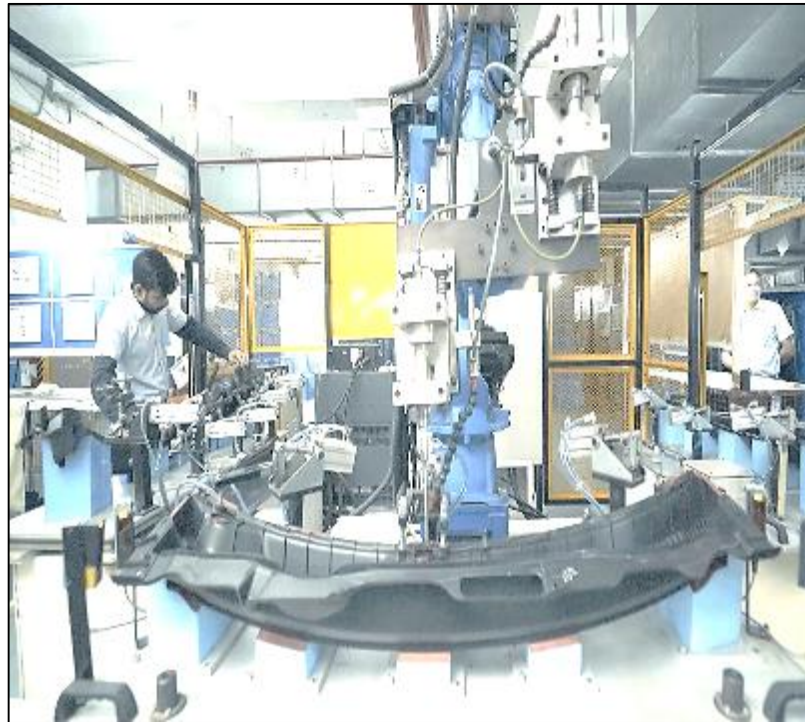
All Plants are ISO, IATF & OHSAS CERTIFIED



INJECTION
MOLDING



ROBOTIC ULTRA SONIC WELDING



BRANSON VIBRATION WELDING



ASSEMBLY LINE



OEM's



Tier-1



Sundaram Auto
Components Limited





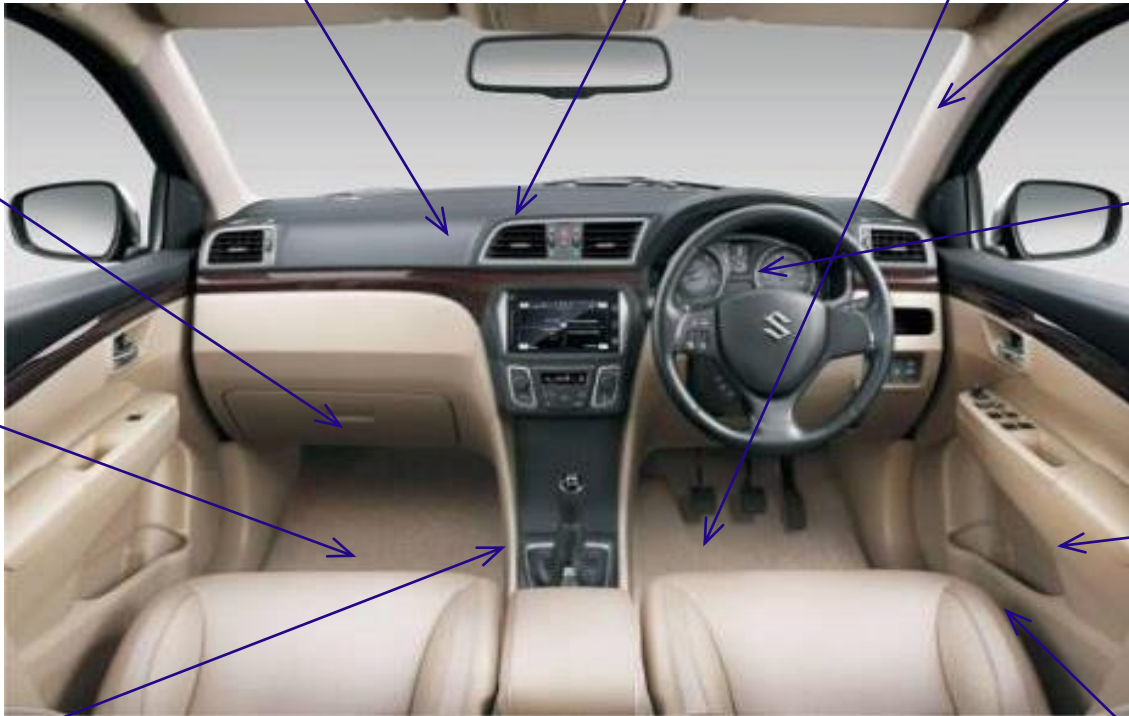


EXTERIOE PARTS RANGE





INTERIOR PARTS RANGE



Instrument Panel

Air Vent

Footrest

Inner Pillar Trims

Glove Box Assy

Pane Instrument Cluster

Cover Floor Console

Door Trim Assy And Parts

Box Floor Console

Quarter Trim

Panel Floor Console Rear

Trim Trail End

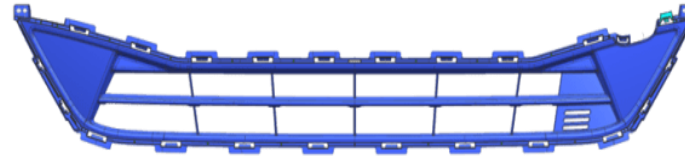
Speaker Grill



UNDER HOOD PARTS RANGE



Absorber Front Bumper



Grill Radiator Lower



Air Filter Cover



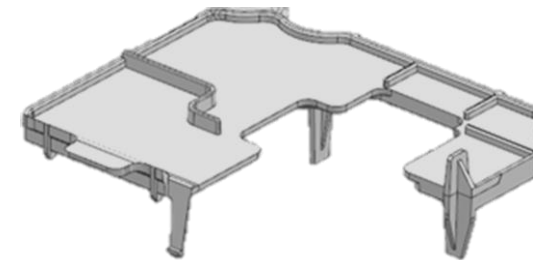
Fan Shroud



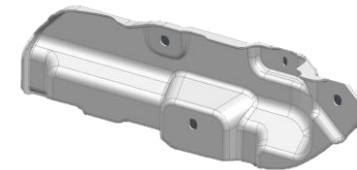
Air Intake Manifold



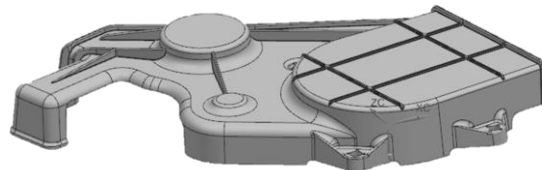
Engine Cover



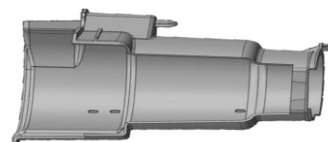
Breather Plate



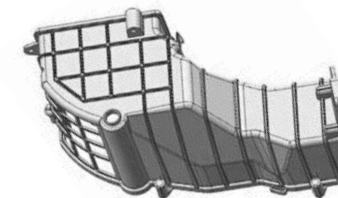
Cover rear Sensor



Cover Comp WP belt



Separator Oil



Air Intake



Housing Top & Bottom





"A" Surface



"B" Surface

Housing Inner

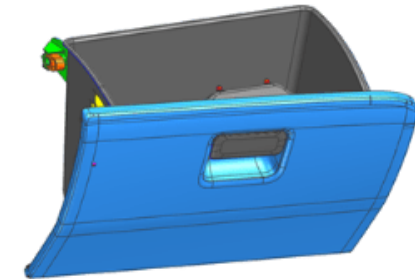


Housing Lens

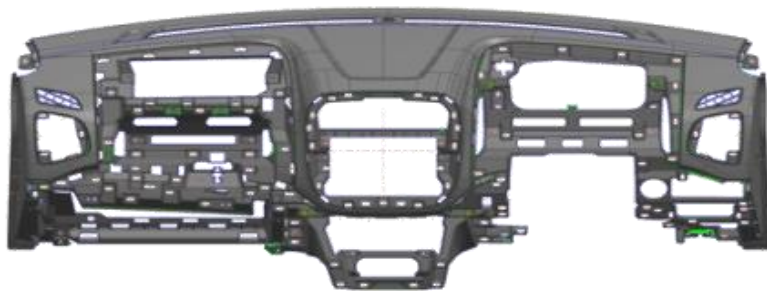


EXPORT PARTS RANGE

- 1) Suzuki- Indonesia (via MSIL)
- 2) Volvo – Thailand & China
- 3) UD Trucks – Japan
- 4) SLP Inc. - USA



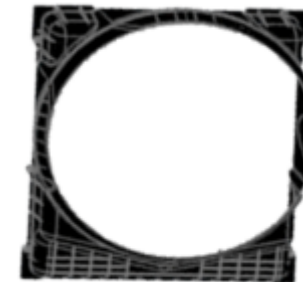
Glove Box Assy



Instrument Panel



Quarter Trim Parts



Fan Shroud



Ash Tray Assy.



Engine Cover



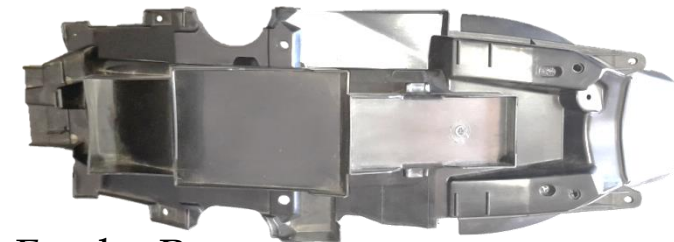
Wheel Choke



HCV Cover



TWO WHEELER PARTS RANGE



Fender Rear



Fender Rear



Shield Leg Lower



Cover Frame Centre Lower



Duct Belt cooling



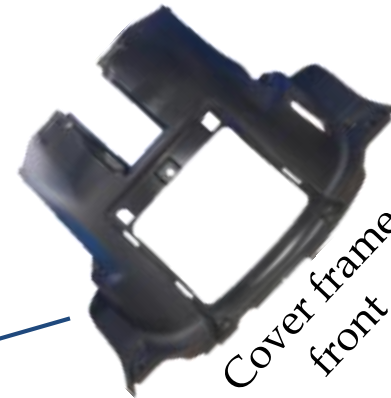
Fender Rear Lower



Cowl Under



Panel



Cover frame front



Lid Fuel Inner



Box belt cooling



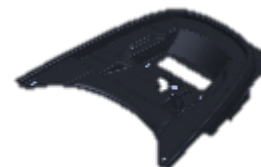
Lid Assy belt cooling box



Duct Belt cooling no.1



Cover frame side



Cover Helmet Box



Cover Frame Centre Lower



HCV/LCV PARTS RANGE



Grill Radiator



Radiator Grill Assy.



Trim Panel A Pillar RH



Pad Assy.



Battery Cover Assy.

Cover Inst. Lower
Assy.

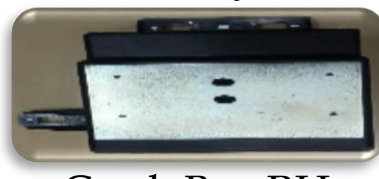
Vent Assy. Part



Garnish Front LH



Tray Assy. Inst.



Crash Box RH



Cover Column LH



Vent Assy.



Cover Meter Assy.



Garnish Front Center



Wheel Chowk



Foot-rest



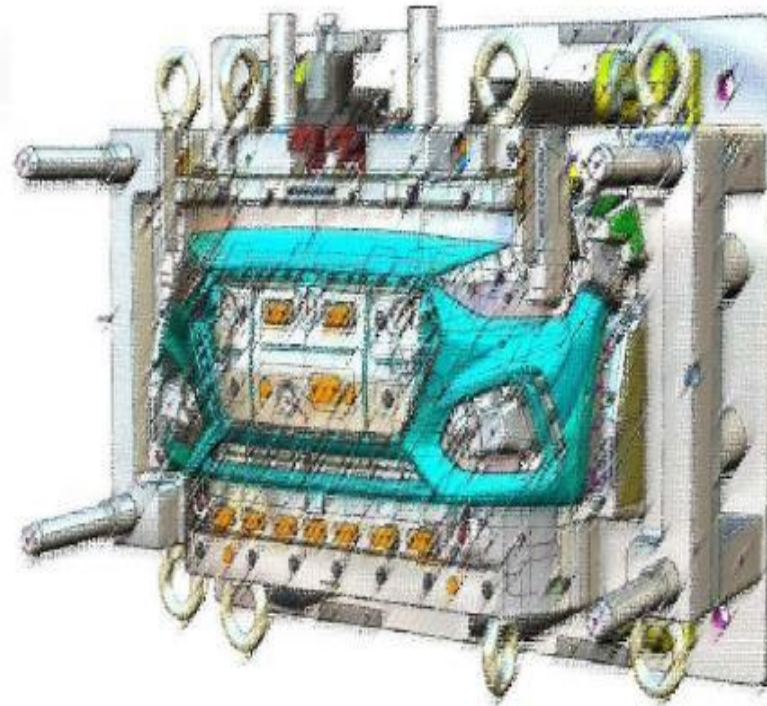
Console Assy. Ct

Cover Meter
Assy.

Lid Cluster A



Head Lamp Bezel RH



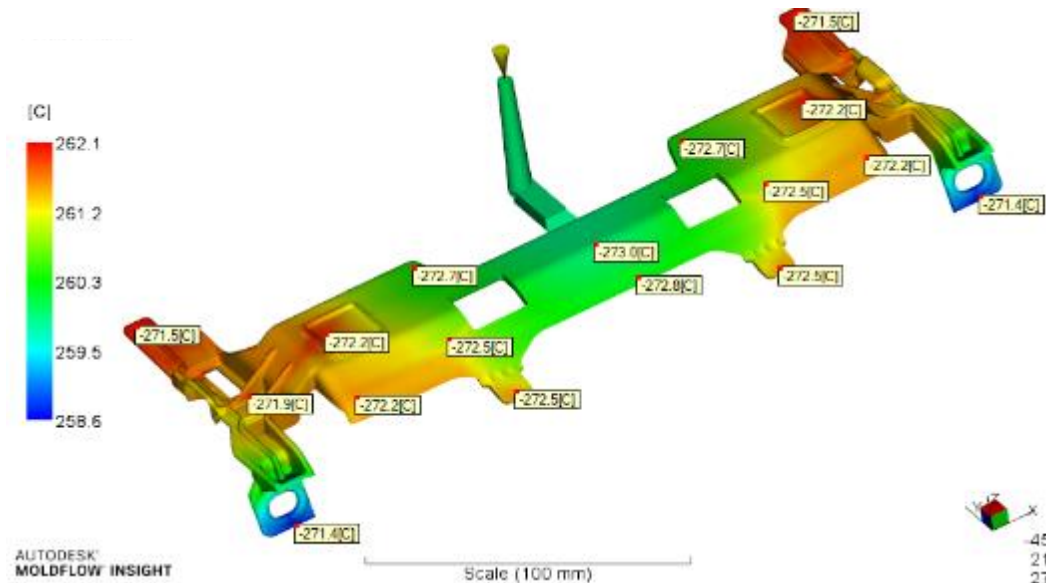
Technical Support from M/s Plakor, Korea



Machino Plastics Ltd.

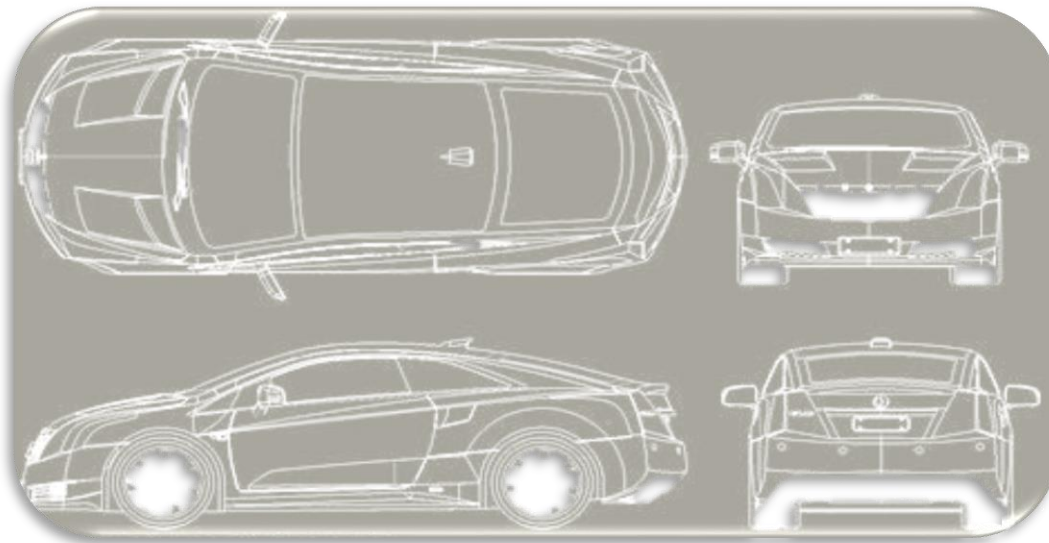
PLAKOR





SERVICES OFFERED

1. Tool Design
2. Tool Manufacturing
3. Reverse Reverse Engineering
4. Mold Flow Analysis
5. Prototype Tooling & Parts
6. Checking Fixture Manufacturing
7. Part Testing & Validation

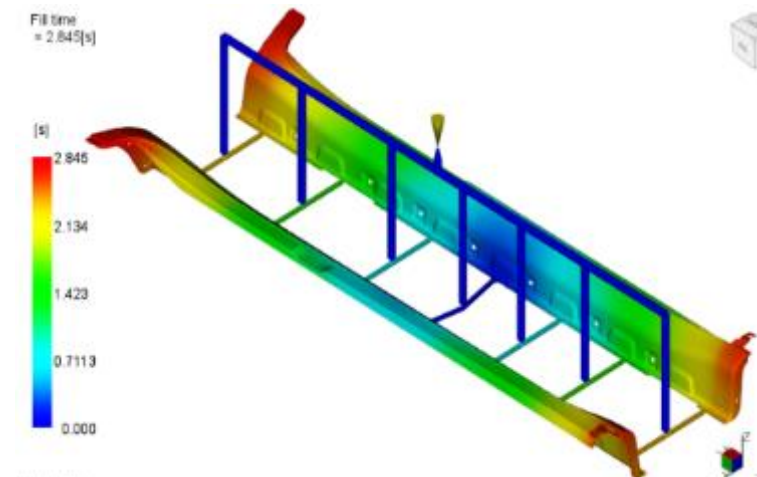
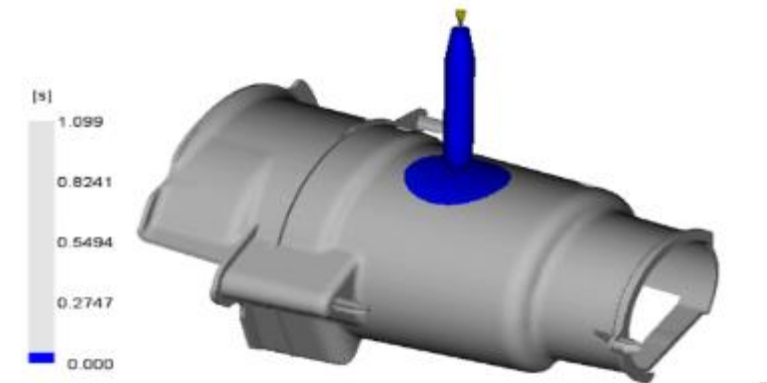
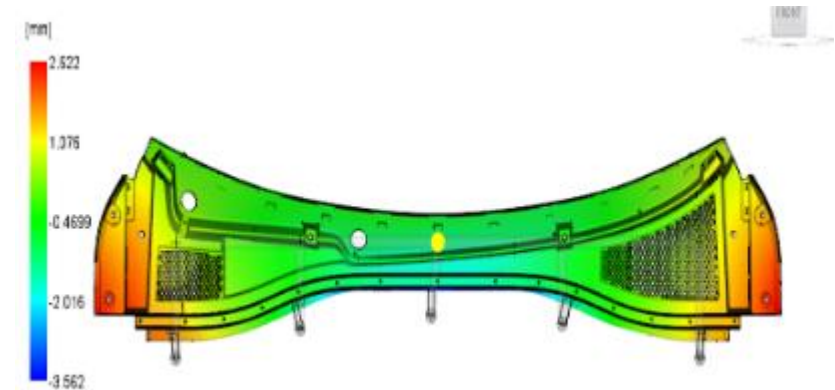




- Unigraphics -NX12
- Unigraphics NX11 Viewer
- Unigr
- aphics NX11 CAM
- Mould Flow Analysis
- Power Mill
- Power Shape
- CAMI Software
- Workstation for design/MFA
- Workstation for programming
- CATIA Conversion through Power Shape

Workstation for design -

- Manesar : 14 PC
- Gujarat : 03 PC



- ❖ VMC Machines
- ❖ Graphite CNC Machine
- ❖ CND EDM (Double Head)
- ❖ CNC EDM
- ❖ CNC Wire Cut
- ❖ Gun Drill- Deep Hole Drill
- ❖ Spotting Machine
- ❖ CMM
- ❖ Mould Flipper
- ❖ Mould Carrier





TOOL ROOM FACILITY- VMC



VMC – 18 Machines

Type - Ref. Table Size	Table Size (mm)	Travel (X/Y/Z) (mm)	Max Load (Kg)	RPM	VMC #	Plant Location
Highest	4200*1750	4000*1750*800	15,000	20,000	10	MPL (Manesar)
Lowest	1100*502	1000*550*500	700	12,000		
Highest	2500*1260	2150*1260*900	5,000	12,000	8	MPBL Becharaji (Gujarat)
Lowest	750*400	600*400*350	500	30,000		



TOOL ROOM FACILITY- EDM



EDM – 10 Machines

Type - Ref. Table Size	Table Size (mm)	Travel (X/Y/Z) (mm)	Max Load (Kg)	Electrode Load (Kg)	EDM #	Facility
Highest	2800*1300	1650*800*800	40,000	300	3	MPL (Manesar)
Lowest	600*450	450*300*320	1,000	50		
Lowest	750*400	440*360*190	1,200	70	7	MPBL Becharaji (Gujarat)
Highest	2000*1000	1500*600*450	4,000	300		

WIRE EDM – 02 Machines



Table Size (mm)	Tilt	Job Load (Kgs)	Facility
800x600	16 Degree	3,000	MPL (Manesar)
780x630	15 Degree	1,500	MPBL Becharaji (Gujarat)

DIE SPOTTING – 02 Machines



Table Size (mm)	Clamp Force (T)	Max Load (T)	Facility
3300x2200x2500	500	30	MPL (Manesar)
2500x1500x2000	300	30	MPBL Becharaji (Gujarat)



CMM – 2 Machines

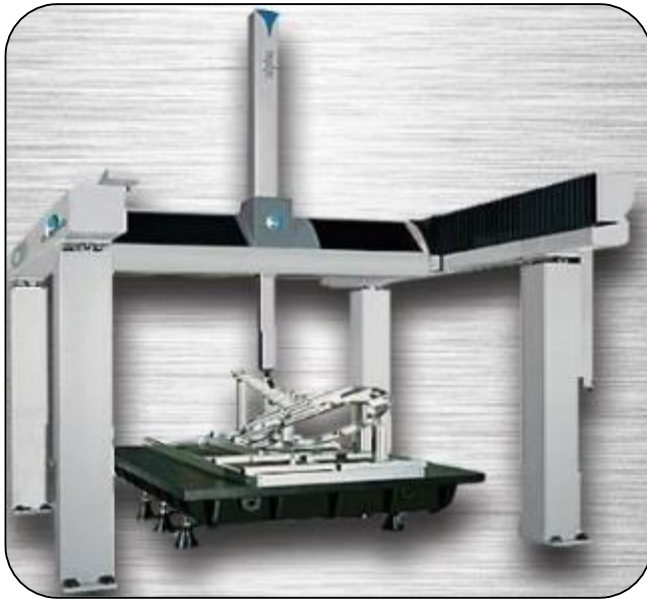


Table Size (mm)	Travel (mm)	Job Load (KG)	Facility
4200*3640*4555	2000*3300*1500	15,000	MPL (Manesar)
1100*800	750*1000*600	680	MPBL Becharaji (Gujarat)

LASER WELDING



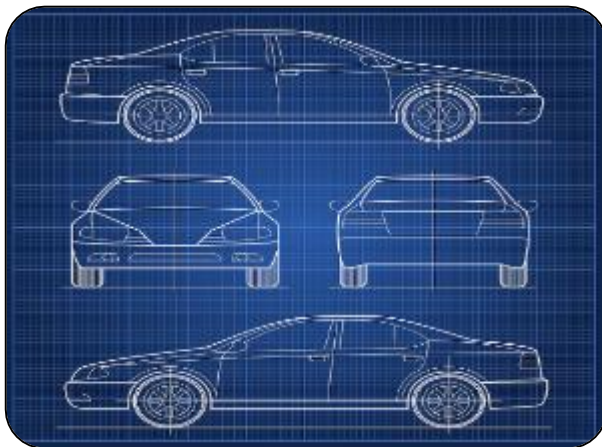
TIG WELDING



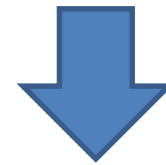


ADVANTAGE IN ONE STOP - COMPLETE SOLUTION FOR PLASTICS

- Mould Flow Analysis
- Part & Tool Feasibility
- Mould Design & Analysis

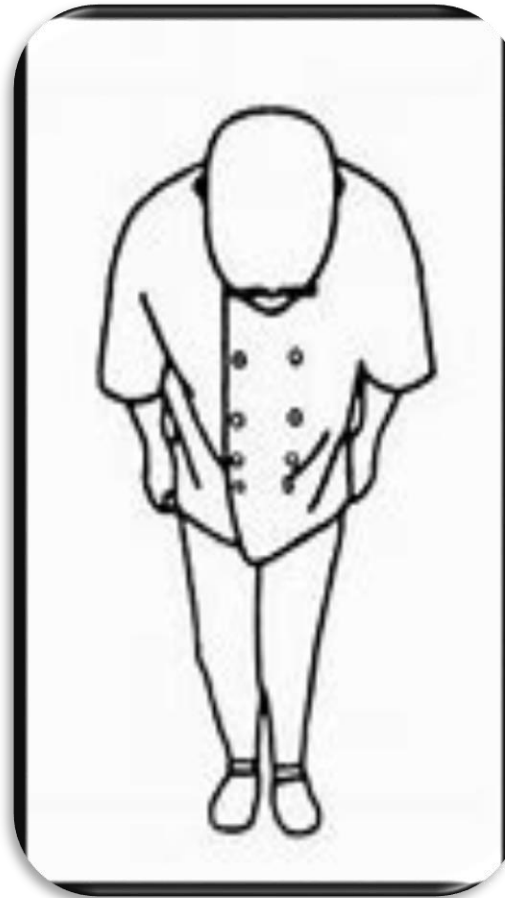


- Moulding Part & Production
- Post Molding Process
- Assembly



- Prototype Development
- Tool & Checking Fixture Manufacturing
- Testing & Validation





Thanks for your Interest